

### **KMT successfully executed the relocation and upgrade of Food Industries Manufacturing Line**

**The scope of work included the electromechanical installation, commissioning & restoring the machine to the base condition as per the Electrical Standards**

KMT managed to execute the relocation 4 days ahead of the target date.

KMT team worked almost 12 hours per day, even during weekends, for the entire project with a total duration of 40 days. The average on-site workforce ranged from 15 to 18 members per day.

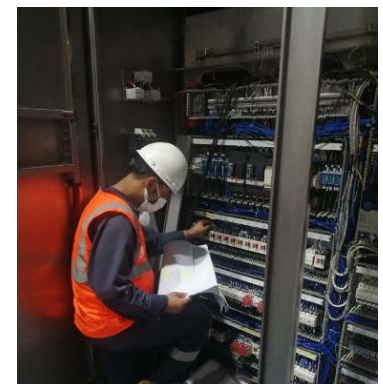
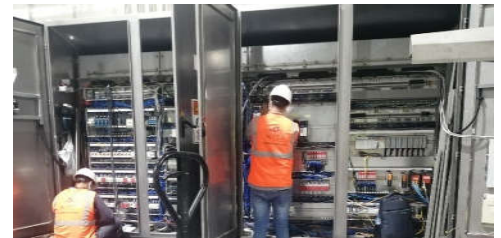
For more efficiency, KMT assigned two engineers to be present daily on-site: the first to observe and lead our crew activity, and the second to supervise the packaging area, bracket welding, basket fabrication, and cable pulling on the packaging platform.

KMT supplied and pulled more than 6250 meters of power & control multicore cables from main panels inside stainless-steel dairy pipes and stainless-steel wire cable basket tray between manufacturing and packaging areas as per the shared cable schedule, using a scissor Lift and two manlifts. The manpower was supervised by two safety officers to cover all work areas and to accelerate the electric scope to meet the project schedule.

KMT was highly flexible about any daily changes across the manufacturing area, especially the need for several panel modifications (which reached almost 65% of the panel scope) to install a lot of devices as per the Schematics Change Markups inside the electrical main panels in addition to the installation of the field devices.

KMT managed to deliver the line up and running before the start of the production date.

KMT is enormously proud to receive such orders from a Multinational Company and to have a fruitful collaboration with this special client.





[www.kmt4is-eg.com](http://www.kmt4is-eg.com)



Egypt

42R, El-Safa Tower – Abd El Hameid Gouda Al Sahar, 6th Sector, Zahraa El Maadi, Cairo.

[info@kmt4is-eg.com](mailto:info@kmt4is-eg.com)

Cell phone: +2 01028464665

Tel: +2 02 27320174/5/8

Fax: +2 02 27320260

Germany

Großreuther Str. 39 - 90425 Nürnberg

[info@kmt4is.de](mailto:info@kmt4is.de)

Tel: +49(911)14879295

Fax: +49(89)4209500499



**Authorised  
Distributor**

A ROCKWELL AUTOMATION PARTNER